



[architype.pl](http://architype.pl)

ARCHITYPE central office

05-555 Tarczyn,  
al. Krakowska 64, Grzędy

[architype@architype.pl](mailto:architype@architype.pl)  
+48 22 602 20 22

## The history of Quartz surface

OD 1987

II INTERACTIVE CATALOGUE

To open a photo of the interior, scan the QR code with a QR code reader.



PREMIUM QUARTZ SURFACES

The international brand Caesarstone was founded in Israel in 1987 and has since earned the right to be called legendary.

Since developing the world's first quartz countertop, Caesarstone has been uncompromising in quality, natural composition, proprietary textures, and manufacturing according to the Italian Breton technology.

Due to its high performance, quartz is successfully used all over the world for kitchen countertops, food preparation areas, bathroom vanities, flooring, stairs, and windowsills.



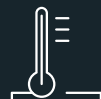
Durable



Guarantee protected



Scratch-resistant



Heat-resistant



Dirt-repellent



Easy to clean



Original decors

WORLD ENVIRONMENTAL STANDARD

One of the most essential advantages is that Caesarstone slabs are environmentally friendly. Caesarstone complies with hygienic and ecological safety standards for humans and the environment.



CAESARSTONE IS THE CHOICE OF STRONG,  
DEMANDING PEOPLE WHO KNOW THE  
ORIGINALS' PRODUCT VALUE.



matte surface



5810 Black Tempal (J)

# Collection METROPOLITAN

4046 Excava (J)



matte surface



4044 Airy Concrete (J)



matte surface



4033 Rugged Concrete (J)



matte surface



4044 Airy Concrete



4033 Rugged Concrete



4046 Excava

Standard slab size (N) 3050 x 1440 mm. Slab thickness: standard - 20 mm, custom - 13 mm, 30 mm. Jumbo size (J) 3340x1640x20 mm

# Collection METROPOLITAN

4011 Cloudburst Concrete (J)



matte surface

4003 Sleek Concrete (N)



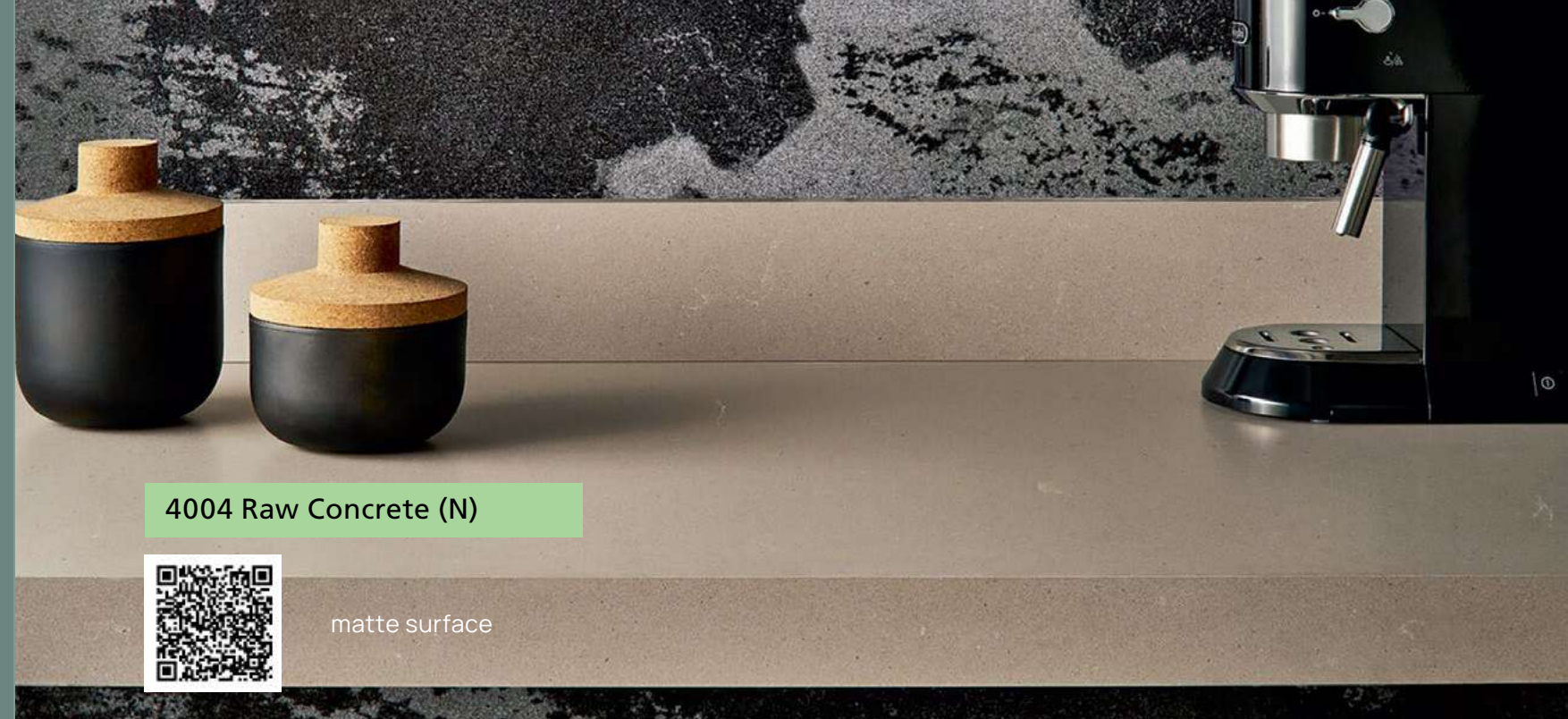
matte surface



4023 Topus Concrete (J)



matte surface



4004 Raw Concrete (N)



matte surface



4023 Topus Concrete



4011 Cloudburst Concrete

# Collection

ULTRA NATURAL

5101 Empire Black (N)



polished surface

5151 Empire White (N)



polished surface

5131 Calacatta Nuvo (N)

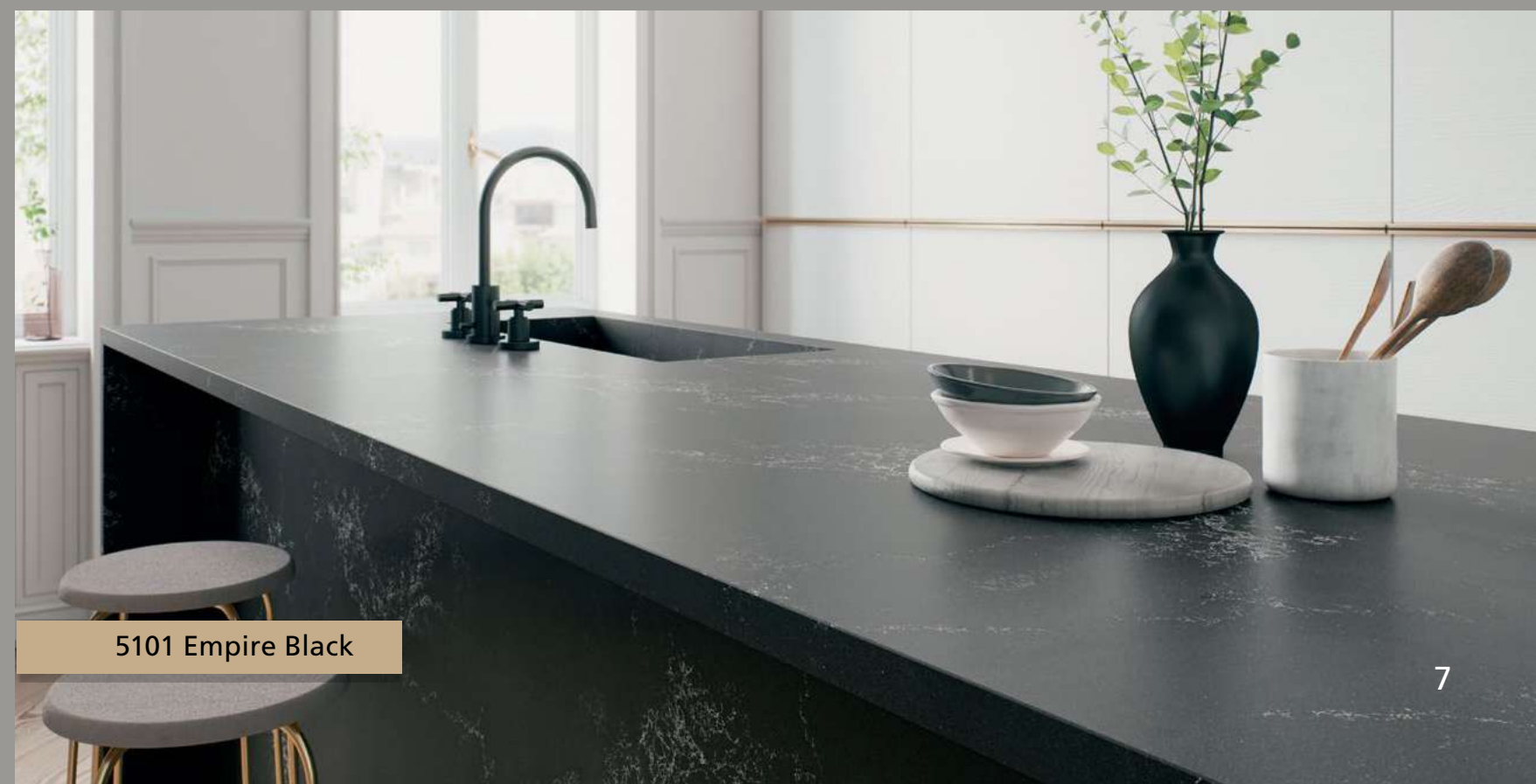


polished surface



5151 Empire White

5131 Calacatta Nuvo



5101 Empire Black

Standard slab size (N) 3050 x 1440 mm. Slab thickness: standard - 20 mm, custom - 13 mm, 30 mm. Jumbo size (J) 3340x1640x20 mm

# Collection

ULTRA NATURAL

5031 Statuario Maximus (N)



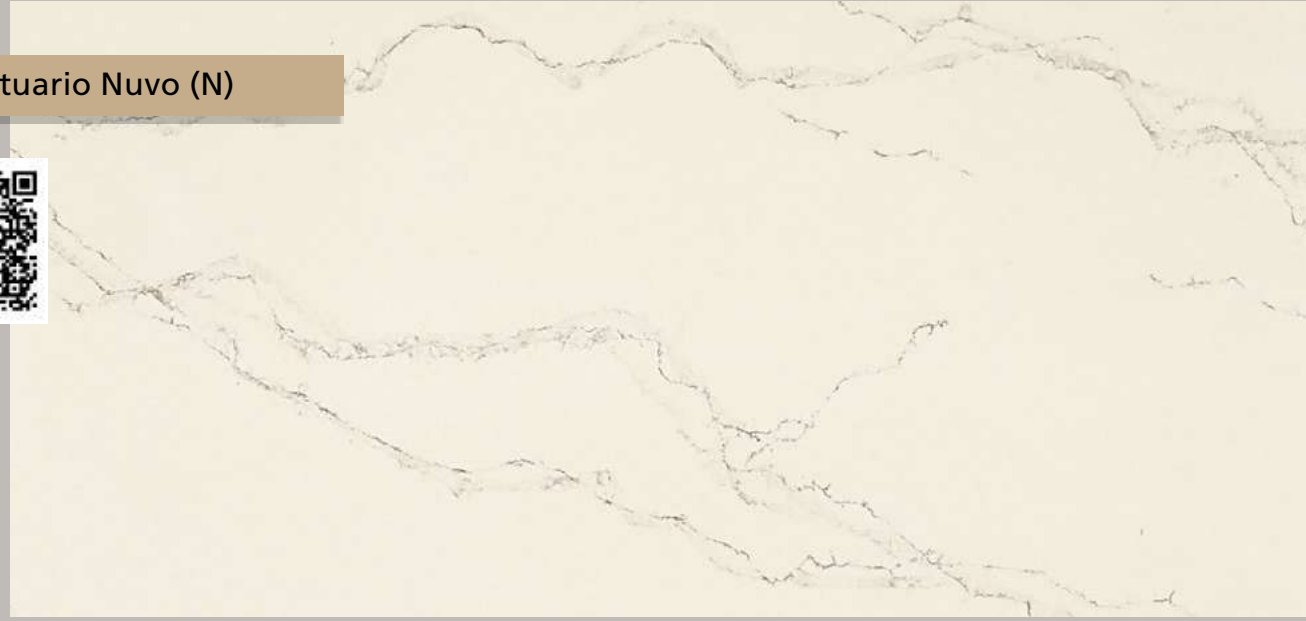
polished surface



5111 Statuario Nuvo (N)



polished surface



5031 Statuario Maximus

5111 Statuario Nuvo



# Collection SUPERNATURAL

5133 Symphony Grey (N)



polished surface

6003 Coastal Grey (N)



polished surface

5003 Piatra Grey (N)



polished surface



# Collection SUPERNATURAL

Standard slab size (N) 3050 x 1440 mm. Slab thickness: standard - 20 mm, custom - 13 mm, 30 mm.

5141 Frosty Carrina (N)



polished surface  
matte surface \*



5212 Taj Royale (N)



polished surface



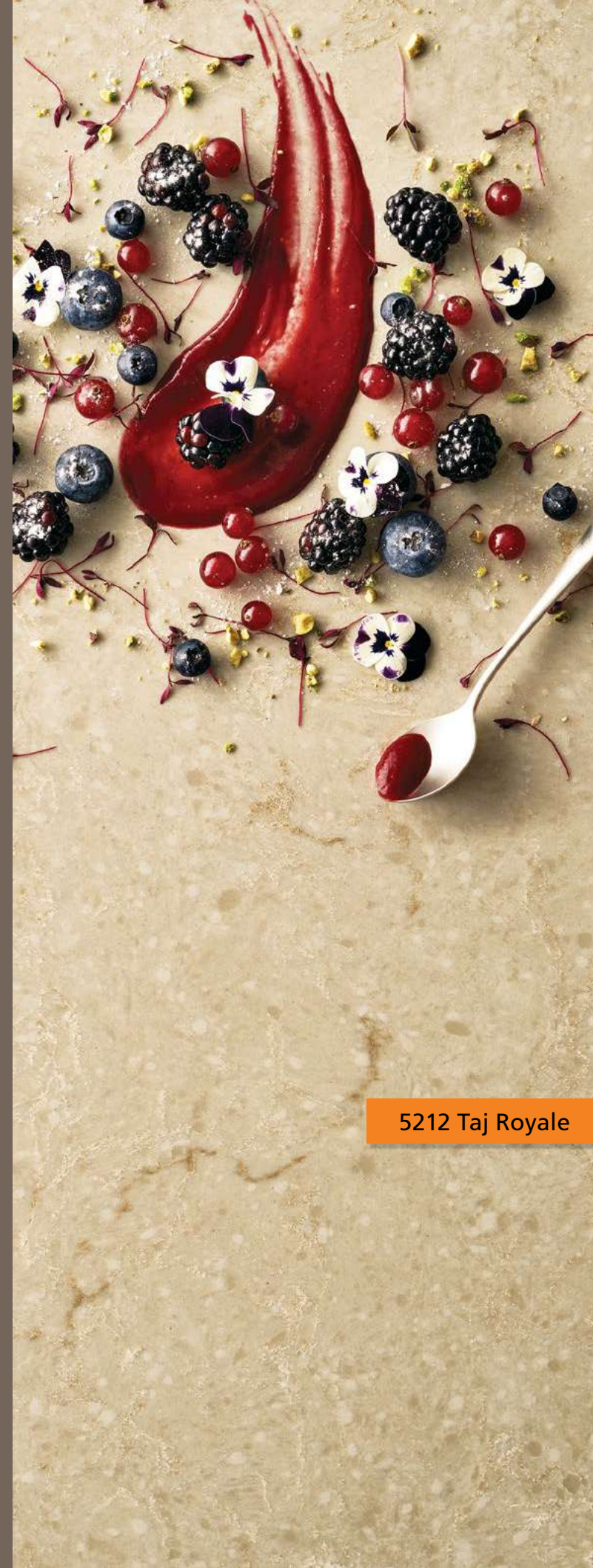
6338 Woodlands (N)



polished surface



\* rodzaj wykończenia dostępny na zamówienie



5212 Taj Royale



6338 Woodlands



# Collection SUPERNATURAL

6046 Moorland Fog (N)



polished surface



5220 Dreamy Marfil (J)



polished surface



5100 Vanilla Noir (N)



polished surface



6046 Moorland Fog



5220 Dreamy Marfil



5100 Vanilla Noir

Standard slab size (N) 3050 x 1440 mm. Slab thickness: standard - 20 mm, custom - 13 mm, 30 mm. Jumbo size (J) 3340x1640x20 mm

# Collection SUPERNATURAL

5211 Noble Grey (N)



polished surface



5110 Alpine Mist (N)



polished surface  
matte surface \*



5143 White Attica (N)



polished surface  
matte surface



\* this type of finish available on request

5211 Noble Grey

5143 White Attica

# Collection SUPERNATURAL

5000 London Grey (N)



polished surface  
matte surface \*



6131 Bianco Drift (N)



polished surface



\* this type of finish available on request

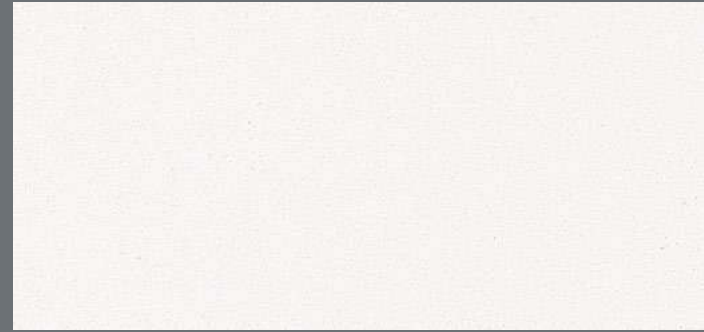


5000 London Grey

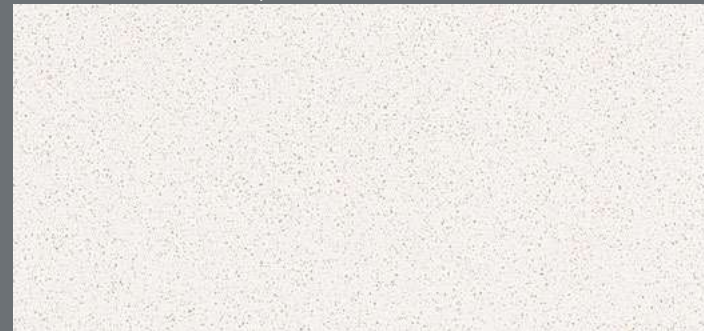


6131 Bianco Drift

# Collection CLASSICO



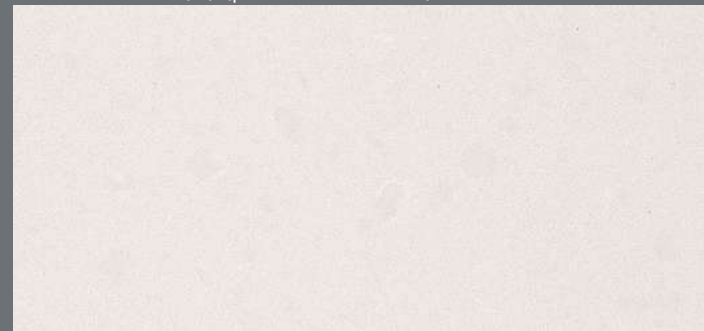
1141 Pure White (N) (polished surface)



2141 Snow (N) (polished surface)



3100 Jet Black (N) (polished surface)



4600 Organic White (N) (polished/matte surface \*)



4130 Clamshell (N) (polished/matte surface \*)



4120 Raven (N) (polished/matte surface )

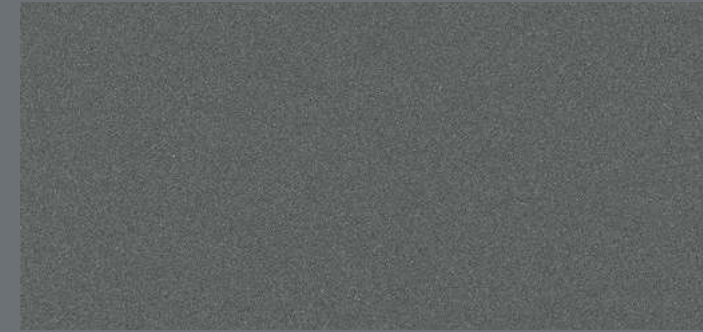


4230 Shitake (N) (polished/matte surface \*)



4030 Pebble / Oyster / Stone Grey (N) (polished/matte surface \*)

# Collection on request CIASICO



2003 Concrete / Gunpowder (N) (polished surface )



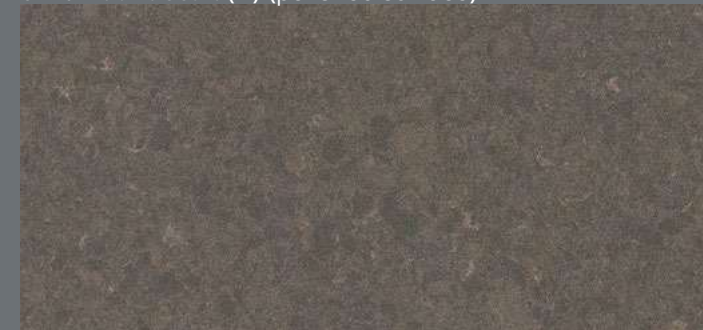
2040 Urban (N) (polished surface)



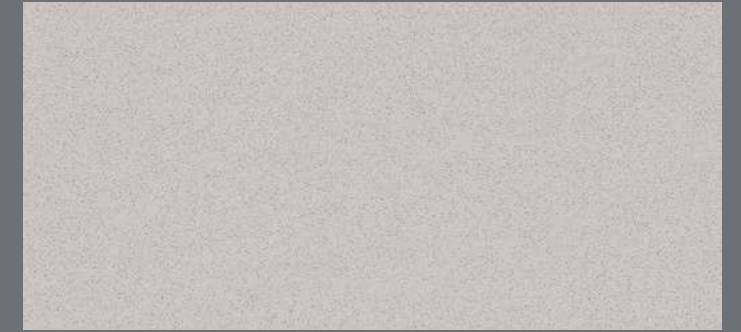
4220 Buttermilk (N) (polished/matte surface )



6270 Atlantic salt (N) (polished surface)



4350 Lagos Blue / Mink (N) (polished/matte surface )



2030 Haze (N) (polished surface )



3040 Cement / Titan (N) (polished surface)



4330 Ginger (N) (polished/matte surface )



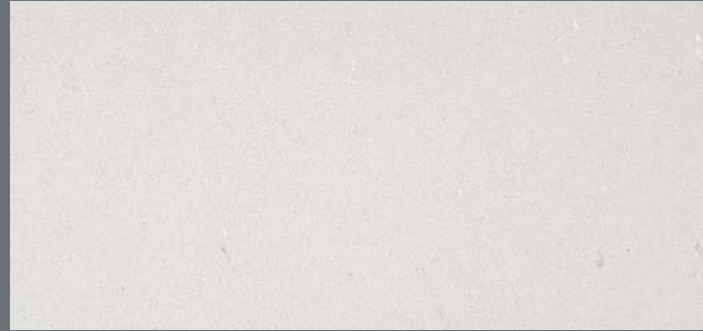
4141 Misty Carrera / Ice Cap (N) (polished/matte surface )

Standard slab size (N) 3050 x 1440 mm. Slab thickness: standard - 20 mm, custom - 13 mm, 30 mm.

Standard slab size (N) 3050 x 1440 mm. Slab thickness: standard - 20 mm, custom - 13 mm, 30 mm

\* this type of finish available on request

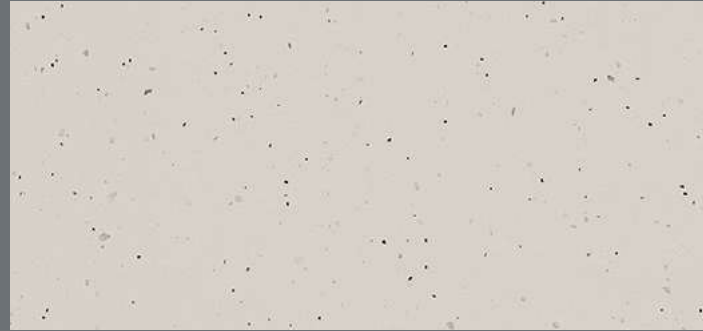
# Collection on request METROPOLITAN



4001 Fresh Concrete (N) (matte surface)



4043 Primordia (J) (matte surface)



4601 Frozen Terra (N) (matte surface)



4735 Oxidian (J) (matte surface)

# Collect on request SUPERNATURAL



5043 Montblanc (N) (polished surface)



5130 Cosmopolitan White (N) (polished surface)



6134 Georgian Bluffs (N) (polished surface)



6313 Turbine Grey (N) (polished surface)

The images of the surfaces are small fragments and do not fully reflect the pattern and palette of the whole slab. You can find the slabs' images on our website [architype.pl](http://architype.pl).



## WHY IS CAESARSTONE QUARTZ BETTER THAN NATURAL STONE?

- Quartz surfaces are more durable than natural granite;
- Quartz slabs are water-resistant - if you spill water, tea, coffee or wine, there will be no stains or other consequences (not even from ripe and juicy fruits). You can't say the same about the marble;
- Due to the accuracy of the surface decoration, it is difficult to distinguish Caesarstone from natural stone. The quality of the Caesarstone pattern is consistent from batch to batch, making it easy to join the slabs together when making the final product;
- Apart from easy maintenance, quartz slabs do not require to be treated with special chemicals against mould and mildew;
- Non-radioactive.

THE DURABILITY OF THE QUARTZ SLAB IS UNCOMPARABLE TO THE DURABILITY OF NATURAL STONE



## COMPARATIVE CHARACTERISTICS OF CAESARSTONE QUARTZ WITH OTHER MATERIALS:

Properties	caesarstone®	Granite / Marble
Resistance to mechanical damage	✓	✓
Resistance to dirt	✓	•
Heat resistance	✓	•
Resistance to household chemicals and acids	✓	•
Ease of care	✓	•
Non-porous structure	✓	•
Resistance to mould and mildew	✓	•
Flexural strength	✓	—
Colour fastness	✓	—

✓ Excellent • Good — Bad

## AREAS OF USE OF CAESARSTONE QUARTZ

Caesarstone quartz slabs combine high performance with aesthetically pleasing decor and are widely used in interior design.



### KITCHEN COUNTERTOPS

Caesarstone countertops are durable, scratch-resistant, hygienic, and easy to clean. Dirt and stains can be easily removed with a cloth and soapy water. The material is environmentally friendly and certified for use in direct contact with food. These properties are the most important when choosing a material for kitchen countertops, bar counters and kitchen islands.



### WALL CLADDING IN THE BATHROOM AND SPA

The absence of pores on the surface of the slabs makes the accumulation of bacteria and the mould formation impossible. Therefore, Caesarstone quartz is the best choice for cladding bathrooms, toilets, and spas. Using large slabs instead of traditional ceramic tiles minimises the number of joints and allows you to fully show off the magnificent stone pattern.



### FLOORING AND STAIRS

Caesarstone slabs have proven to be robust and durable for floors and stairs in busy public buildings. Caesarstone quartz can be found on the floors of airports, underground stations, and major shopping malls around the world.



### DESIGN OF RESTAURANT HALLS, SHOPPING CENTRES AND OFFICE PREMISES

In terms of design, Caesarstone rivals the beauty of natural materials - marble, granite, and travertine. The decor of Caesarstone surfaces is so perfect that the world's leading designers use this stone to bring their best projects to life.